

# Guide of Our Company

as of April, 2007



**ASAHI INDUSTRY AND SCIENCE TECHNOLOGY (SHANGHAI) CO., LTD.**

### Our Commitment

We do our best to provide **BETTER** products  
of **HIGHER** quality at a **LOWER** price

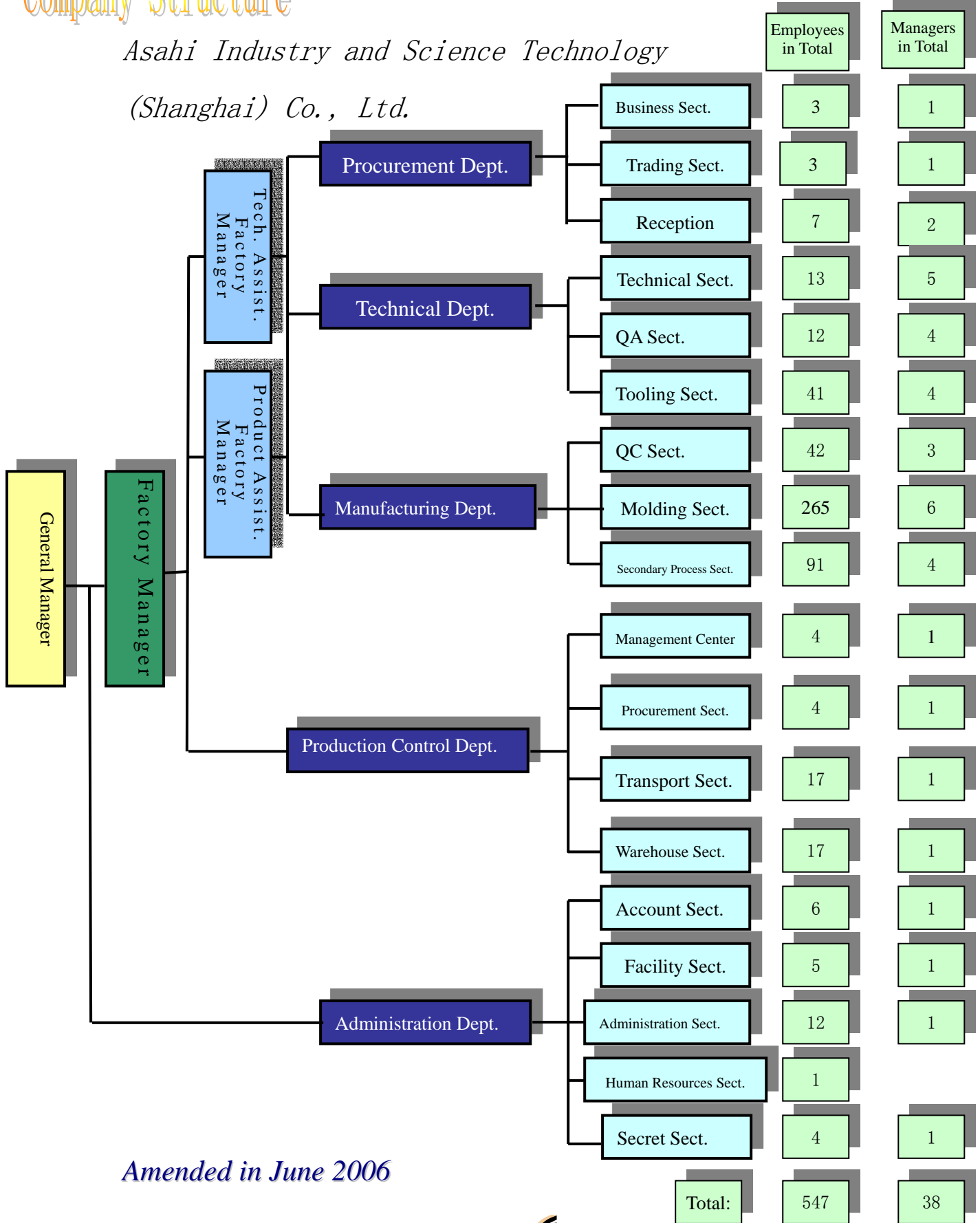
- Name Asahi Industry and Science Technology (Shanghai) Co., Ltd.
- Location No.225 Jiujing Road Songjiang Industry Area Shanghai  
TEL: 021-67697360 FAX: 021-67697361
- Inhabit acreage 35,500m<sup>2</sup>
- Bldg acreage 24,000m<sup>2</sup>
- Foundation January , 1994
- Capital US\$8,000,000-
- Investor 100% by Japan Asahi
- Representative General Manager (Mr) MITSUO YOSHIMOTO
- Business scope Tooling, Moulding of Plastic parts, Painting, Printing, Silk-screen Printing and Assembly
- Employees 550 employees
- E-mail Address [yoshimoto@asahi.sh.cn](mailto:yoshimoto@asahi.sh.cn) (Japanese)  
[asahi@asahi.sh.cn](mailto:asahi@asahi.sh.cn) (Chinese)



# Company Structure

Asahi Industry and Science Technology

(Shanghai) Co., Ltd.



Amended in June 2006



## Company 's Aims



- *The best quality*
- *The best technique*
- *The lowest cost*
- *The best production efficiency*
- *The best quality of education for employees*

## Our R & D

*Large-scaled R & D Centre*

*Continuous inputting to the Research*

*Adopting advanced developing technique*

*R & D closed to production*

## Major Products



## Tooling Equipment -----

Name of Equipment	Manufacturer	Q'ty
Numerical Control Center (加工中心)	Makino-Japan/ Campro-Taiwan	2
Numerical Control Cast Machine (数控铣床)	SHIZUOKA-Japan	2
NC-Wire Cut Machine (线切割)	Sodick-Japan/DaLiang-Shanghai	2
Precision Grinding Machine (精密磨床)	NICCO-Japan/Domestic(3)	4
Cast Machine (铣床)	Makino-Japan	7
Electric Discharge Machine (放电机)	Japax-Japan /LianShen-Taiwan/ KING SPARK-Taiwan(3)	5
CNC-Engraving Machine (雕刻机)	LuoKeJiDian-Shanghai	1
Precision Mold Padding Welder Exclusive Use for Mold (精密模具专用补焊机)	SW-9800-Japan	1
High Speed Drill Machine (高速穿孔机)	D703F-China	1
Drill Machine (立钻)	Yoshida-Japan/Domestic(2)	3
Lathe Machine (车床)	MAZAKI-Japan/QiaoJin-Taiwan	2
Saw Machine (带锯)	ANDOSAW-Japan(2) /Korea	3
Mold- Clamping Machine (合模机)	DXS-100T-DaLianDaXian	1
Mold-Overturing Machine (液压自动翻磨机)	Fulida (15T)	1
Precision Cool Weld Machine (精密模具冷焊机)	IMW-IIX-Japan	1
Precision Grinding Tool Machine (精密磨刀机)	NEWS CF-200-N-Japan	1



Numerical Control Center



NC-Wire Cut Machine



Numerical Control Center



Electric Discharge Machine



## Quality Mensuration Implement -----

Name of Equipment	Manufacturer	Q'ty
Double Posts Digital Height Gauge (双柱高度计)	MITUTOYO	2
Profile Projector (投影仪)	Nikon-6C-2/XinTian-JT12A-A	2
Digital 3D Measuring Instrument (三次元测定计)	TOKYO SEIMITSU	1
Digital Thickness Measurer (测厚仪)	ERICHSEN	1
Supersonic wave Thickness meter (超声测厚仪)	POSITECTOR@100	1
Spectrometer (分光测色计)	MINOLTA CM-2600d	1



Digital 3D Measuring Instrument



Profile Projector



Digital Thickness Measurer



Supersonic wave Thickness meter



Spectrophotometer



Usual measuring equipments



**Main Equipment**

**Total 48 machines**

Injection Moulding Machine	Quantity	Injection Moulding Machine	Quantity
30(Electrical)	2	190t	2
50t(Electrical 2)	4	240t	1
70t	2	280t	4
Vertical 75t	1	350t	4
80t(Electrical)	2	450t	4
100t	2	550t	4
130t	2	650t	2
140t	1	850t	3
150t	2	1050t	2
160t	3	1300t	1



Layout view of small type injection moulding machine area



Layout view of large type injection moulding machine area



Foil feeding machine



Nitrogen gas injection system



## *Painting Equipment*

<b>Equipments</b>	<b>Manufacturer</b>	<b>Method</b>	<b>Quantity</b>
Powder coating line for Metal	Domestic	Manual	1 line
Painting line for Plastic	Domestic	Manual	4 lines
Painting line for Plastic	SEIWA-Japan	Automatic	2 lines
Painting line for Plastic	MITSUBISHI-Japan	Automatic (Robot)	4 lines



## *Printing Equipment*

<b>Equipments</b>	<b>Manufacturer</b>	<b>Quantity</b>
Printing Machine	NAVITAS-Japan	4 sets
Auto line (18m with oven)	Domestic	1 line
Auto line (12m with oven)	Domestic	4 lines



Printing auto lines





## Assembly Equipment

---

Equipments	Manufacturer	Quantity
Hot Stamping Machine (Rolling)	TAIHEIKOGYO-Japan	1set
High Frequency Welding Machine	SEIDENSHA-Japan	1set
Hot Stamping Machine	AMACK(2)/KATANI-Japan	3sets
Ultrasonic Plastic Welder	CHO-ONPA KOGYO-Japan	1set

## Storage

---

Total storage area: 6500m<sup>2</sup>



Completed Products Warehouse  
(4500m<sup>2</sup>)



Raw Materials Warehouse  
(2000m<sup>2</sup>)



## OUR ABILITY & COMMENDATIONS-----

Worldwide foreign merchant investment enterprise of good stand

Shanghai foreign capital investment advanced company

A- Grade enterprise company (Jiading Customs)

A- Grade enterprise company (Songjiang Customs)

The first-class enterprise company

(Shanghai entry-exit inspection and quarantine bureau)

2004 fiscal year the ten bests in manager of foreign-affiliated company

(The Peoples Government of Jiangqiao town Jiading District)

2004 fiscal year the ten bests sales promotion in foreign-affiliated companies

(The Peoples Government of Jiangqiao town Jiading District)

Key enterprise at Songjiang district

(The Peoples Government of Songjiang District)

Award of superior company by Panasonic System Solutions Suzhou Co., Ltd.

Award of superior company by Shanghai Matsushita Microwave Oven Co., Ltd.

Award of superior company by Shanghai Ricoh Facsimile Co., Ltd.

Award of superior company by Fujitsu General (Shanghai) Co., Ltd.

Award of superior company by JVC Shanghai Electronics Co., Ltd.

CMS Certificate by The institution of judging and certifying Ricoh Group  
Chemical Substances Management System

ISO9001-2000 Certificate

ISO14001-2004 Certificate



## Major Customers-----

Panasonic System Solutions Suzhou Co., Ltd.

Shanghai Matsushita Microwave Oven Co., Ltd.

Shanghai Ricoh Facsimile Co., Ltd.

Toto Ltd.

Toto (Shanghai) Co., Ltd.

Toto EastChina Co., Ltd.

Family Health Equipment (Shanghai) Co., Ltd.

Shanghai Koito Automotive Lamp Co.,Ltd.

Infinite Shanghai Communication Terminals Ltd.

Vaillant GmbH

Konica Minolta Optical Products (Shanghai) Co., ltd.

Shanghai Onkyo Electronics Corporation

Shanghai Kenwood Electronics Co., Ltd.

Shanghai Daikin Air Conditioning Co., Ltd.

Fujitsu General (Shanghai) Co., Ltd.

Shanghai Mitsubishi Electric & Shangling Air-Conditioner and Electric Appliance Co., Ltd.

Shanghai Hitachi Electronics Co., Ltd.

Shanghai Sharp Electronics Co., Ltd.

Juki (Shanghai) Precision Machinery Co., Ltd.

Juki Hiroshima Co., Ltd.

Hangzhou Kunioka Chemical Products Co., Ltd.

Hangzhou ASTI Electronics Co., Ltd.

Shanghai Teraoka Electronics Co., Ltd.

Shanghai Touken Collaboration Trading Corporation

## Overseas Companies-----

### **Mother Company** *Asahi kako Company Ltd.*

3-9-8 Tomobuchi-Cho Miyakojima-Ku, Osaka (534), JAPAN

TEL: 06-6923-5567 FAX: 06-6923-7787

Homepage: <http://www.asahi-kakou.co.jp>

E-mail address: [asahikk@mx1.alpha-web.ne.jp](mailto:asahikk@mx1.alpha-web.ne.jp)

Capital : 15,000,000 JPY

Total Staff : 43

Occupied Area: 1,090m<sup>2</sup>

Architectural Area: 2,178m<sup>2</sup>

### *Togane Factory*

743-2 Takizawa Togane Chiba

TEL: 0475-50-5031 FAX: 0475-50-5035

E-mail address: [asahi\\_ti@mx1.alpha-web.ne.jp](mailto:asahi_ti@mx1.alpha-web.ne.jp)

Total Staff : 10

Occupied Area: 312m<sup>2</sup>

Architectural Area: 195m<sup>2</sup>

### *Sankyo Co., Ltd.*

3-7-27 Takakura-Cho Miyakojima-Ku Osaka

TEL: 06-6923-0137 FAX: 06-6923-0159

E-mail address: [asahitak@mx1.alpha-web.ne.jp](mailto:asahitak@mx1.alpha-web.ne.jp)

Capital : 10,000,000 JPY

Total Staff : 32

Occupied Area: 560m<sup>2</sup>

Architectural Area: 1,068m<sup>2</sup>



*Contact us*-----

Company name: Asahi Industry and Science Technology (Shanghai) Co., Ltd.

Address: No.225 Jiujing Rd. Songjiang Industry Area Shanghai

Zip code: 201615

TEL: +86-21-67697360

FAX: +86-21-67697361

E-mail: asahi@asahi.sh.cn

